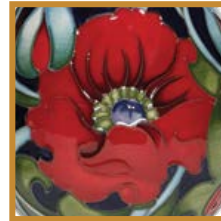
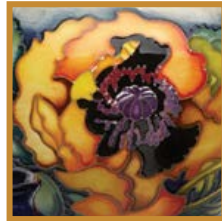
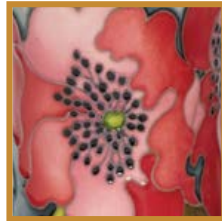


MOORCROFT



— AUTUMN 2022 —

MINATURES OF THE MONTH

Designer: Vicky Lovatt



January
 Chanony Point | 198/2
 Reverse of vase
February
 Tideline | 869/2
March
 Spring Scilla | 98/2
April
 Staffa Puffins | 65/2
May
 Summer's Shoreline | 49/2
June
 Hottentot Fig | 576/2



July
 Sand Dune Dance | 769/2
 Reverse of vase
August
 Silene Maritima | 7/2
September
 Dune Brittlestem | 54/2
October
 Kittiwake | 32/2
 Reverse of vase

MOTHER SHIPTON

Designer: Alicia Amison

Mother Shipton is a characteristic grassland species of moth named after Old Mother Shipton, a 16th century Yorkshire witch, due to the distinctive markings on its wings. It was a meadow of pale white and pink blushed clover that Alicia chose for her two moths to alight upon, while tucked away on the reverse of the vase is a caterpillar.



393/4 | Limited Edition 20

APRIL'S INNOCENCE

Designer: Kerry Goodwin

Daisies grow every spring, and for many people they represent innocence and fun. They are the birth flower of April.



364/5 | Open Edition

ANURA

Senior Designer: Rachel Bishop

With a hop, skip and a jump a new frog design leaps into the world. Featuring an adventurous tree frog tucked amongst branches and flowers. Tree frogs have long hind legs and smooth skin but one of their unique characteristics is the adhesive pads on their fingers and toes, which help them climb in trees.



780/4 | Numbered Edition

MEMORIES FROM MY PAST

Designer: Paul Hilditch

Stepping back in time to the 1960s, Paul takes us to some of his favourite childhood jaunts in Stoke-on-Trent. Firstly, we see an oatcake shop, which was two doors down from Paul's Gran's house on Heaton Terrace. A turn of the corner and we are on to Peel Street in Wolstanton where the family barbers resides. The next scene features Clive's Hardware Store, a shop once located on Wolstanton High Street.



18/16 | Numbered Edition

CORNWALL AIR AMBULANCE

Designer: Paul Hilditch

Cornwall Air Ambulance is the charity that provides critical care to the most seriously sick and injured people in Cornwall and the Isles of Scilly. The crew are tasked to more than 1000 missions every year, and with no direct government support towards running costs, the charity relies on the generosity of the people and businesses to keep the helicopter flying. Moorcroft have created a bespoke ceramic collection for the charity capturing a response flight of the AW169 helicopter, which will raise money to fund future lifesaving missions. Paul takes you on a fast-response flight over some of the county's isolated beaches, farmland, rural settlements and twisting narrow roads that the Cornwall Air Ambulance circumvent in minutes, in an epic journey of wonder.



PLQ17 | Numbered Edition

198/5 | Numbered Edition

FANTASTIC GARLAND

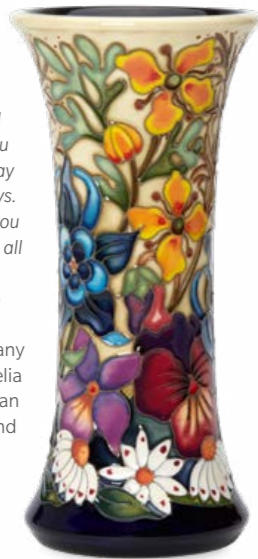
Senior Designer: Rachel Bishop

William Shakespeare's eyes were always open to the beauties of nature. In his plays, poems and sonnets he named 180 different plants.

In Hamlet, Shakespeare's Gertrude says "they were fantastic garlands did she come with" and as Ophelia's madness occurs in early summer, although the violets are "all withered", she could pick in abundance fennel, columbines, daisies and pansies.

There's Rosemary, that's for remembrance; pray you love remember, and there is pansies, that's for thoughts. There's fennel for you, and columbines: there's rue for you and here's some for me: we may call it herb of grace o' Sundays. There's a daisy, I would give you some violets, but they wither'd all when my father died.
Ophelia - Hamlet Act 4 Scene 5

Fantastic Garland embodies many of these floral motifs that Ophelia recalls, creating a Shakespearian bouquet full of symbolism and colour.



159/6 | Numbered Edition

BURSLEM BRANCH CANAL

Designer: Kerry Goodwin

Utilizing a shape reminiscent of the bottle oven itself, Kerry takes you into the heart of The Potteries on a traditional canal narrowboat. When the canal was authorised by an Act of Parliament in 1797, it paved the way for Burslem to become the Mother Town of The Potteries.

Construction work was completed in 1805. Large quantities of china clay, stone and other raw materials were shipped in for use at the Burslem pot banks and finished ware was exported via the River Mersey and Liverpool Docks.

Whilst the canal was abandoned in the 1960s, the skyline of bottle ovens and industrial buildings towering overhead can still be glimpsed in parts of the city today. The narrowboat in this cityscape glides towards furlong mills, an extant wharf and warehouses dating from the second half of the 19th century.



MLK | Limited Edition 20



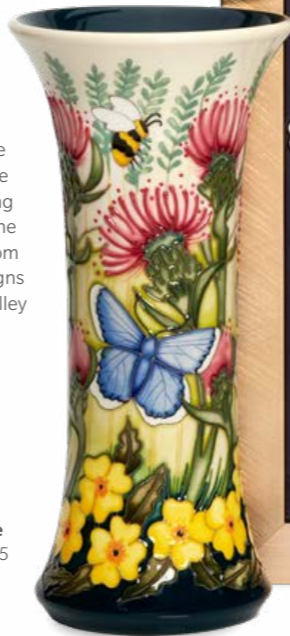
Reverse of Vase

CHURNET VALLEY COLLECTION

Designer: Vicky Lovatt

Weaving its way through the Pennines' hills and valleys, the Churnet Valley railway was completed in 1849 and finally closed in 1988. Happily, for posterity, the central section passed into the hands of a preservation society, The North Staffordshire Railway Society. Vicky often uses the Churnet Valley railway to enjoy the scenery, and the more familiar she became with the landscape, the more she paid attention to the flowers to be found along the picturesque route of the Churnet Valley Railway. From there, the idea of two designs inspired by the Churnet Valley was born.

Churnet's Common Blue
159/8 | Limited Edition 25



Churnet Valley
PLQ3 | Numbered Edition



PUGIN'S GEM

Designer: Vicky Lovatt

St Giles Catholic Church in Cheadle, Staffordshire is considered to be one of the finest of all the churches built by the celebrated nineteenth century architect, writer and designer Augustus Welby Northmore Pugin. His prolific output included the interior designs for the Palace of Westminster and over one hundred churches and cathedrals, of which St Giles' Catholic Church is a shining example.

"I have wanted to do a design based on 'Pugin's Gem' as the interior is absolutely unreal. You can't believe that this architectural wonder is sitting on our doorstep.

I recommend that everyone should go and visit. It's well worth putting a pound in the donation box to switch the lights on for 20 minutes and marvel at the church's interior." – Vicky Lovatt



317/9 | Limited Edition 15

CONFETTI

Designer: Emma Bossons FRSA



393/7

75/10

200/8

65/6

7/5

72/6

TALWIN

Designer: Nicola Slaney



364/8

87/9

80/9

MLK

99/8

CHARLES RENNIE MACKINTOSH AND THE GLASGOW FOUR

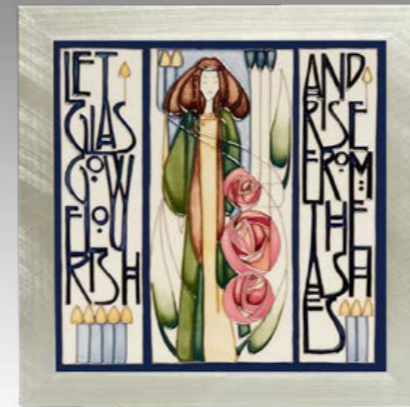
Charles Rennie Mackintosh was a Scottish architect, artist, designer and watercolourist who has inspired Moorcroft designers over the years. These limited edition plaques are inspired by Mackintosh and his contemporaries.



Kingsborough Gardens
Designer: Emma Bossons FRSA
PLQ7 | Limited Edition 10



Swansong
Designer: Kerry Goodwin
PLQ7 | Limited Edition 15



Let Glasgow Flourish
Designer: Vicky Lovatt
PLQ8 | Limited Edition 15



Buchanan
Designer: Nicola Slaney
PLQ8 | Limited Edition 5



Art in the Flower
Designer: Nicola Slaney
PLQ8 | Limited Edition 10



WOOD WARBLER

Designer: Vicky Lovatt

The attractive but unobtrusive wood warbler has bright yellow upper parts, throat and upper chest and white under parts. Despite being widespread in deciduous forest in Europe, particularly in the western oak woods of Wales, the species is on the RSPB's Red List, meaning that they face severe decline and need urgent conservation action. Now more than ever, it is important for us to pay attention to birds in danger, which is why Moorcroft designers continually celebrate their form in design and we continue to work closely with wildlife charities.

The wood warblers of Vicky's design sit on leafy oak branches, laden with plump acorns. Their beaks are wide open, letting the world know about their presence during the dawn chorus.



41/4 | Limited Edition 25



RSPB MINSMERE 75TH ANNIVERSARY COLLECTION

RSPB Minsmere certainly lives up to its reputation for being the crown jewel of the RSPB's reserves. Located on the Suffolk coast, it is one of the richest wildlife sites in Eastern England. The reserve consists of marshes, reedbed and open water; it has mature woodland as well as heathland and, of course, the coast which borders the reserve, famed for heralding the return of the avocet to our shores after more than a century.

For 75 years, visitors have heard bitterns booming or the piercing shrill 'eeyah' of the marsh harriers. Moorcroft celebrates this landmark year with the RSPB Minsmere 75th Anniversary Collection.

Produced under license from RSPB Sales Ltd to raise awareness of the RSPB (charity registration England and Wales no 207076 and Scotland no SC037654). For all licensed products sold by W. Moorcroft Ltd, W. Moorcroft Ltd will donate a minimum of £1000 per annum to RSPB Sales Ltd, which gives all its distributable profits through Gift Aid to the RSPB.



Green-eyed Bee

Designer: Emma Bossons FRSA
PLQ6 | Open Edition



Pantaloone Bee

Designer: Emma Bossons FRSA
55/2 | Open Edition



Jewel Wasp

Designer: Emma Bossons FRSA
158/4 | Open Edition



The Scrape

Designer: Emma Bossons FRSA | PLQ13 | Limited Edition 25



Marsh Harrier

Designer: Kerry Goodwin | 300/13 | Limited Edition 10

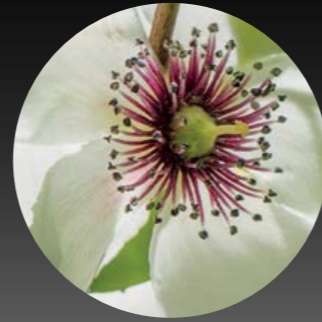


Reverse of vase

SIR HAROLD HILLIER COLLECTION

Senior Designer: Rachel Bishop

The Sir Harold Hillier Gardens is a Grade 2 listed garden, south of Winchester, in Ampfield near Romsey. The site contains a superb plant collection created by the great plantsman, Sir Harold Hillier. Present day, it remains under the trusteeship of Hampshire County Council continuing Sir Harold's philosophy of maximising the potential of the collection for conservation, education and recreation. The Gardens grow over 12,000 different taxa (types of plants) in over 45,000 plants and holds 14 National Plant Collections, set in a complementary mixture of formal and informal; landscapes and garden styles. It is very much a garden for all seasons and a horticultural gem



© Matt Pringle. Bentry.



© Matt Pringle.
Hypericum 'Golden Jewell'/'Magic Jewell'



Hypericum Golden Jewell
7/3 | Open Edition



Bentry
32/8 | Numbered Edition



Floral Cascade
364/12 | Open Edition



Floral Cascade
PLQ11 | Numbered Edition



Floral Cascade
CL1 | Numbered Edition



The Glade
PLQ11 | Numbered Edition

© Matt Pringle.
The Glade



PAIX

Designer:
Emma Bossons FRSA



A CENTURY OF COLOUR

Designer: Nicola Slaney



PLQ12 | Numbered Edition

FOREVER ENGLAND

Designer: Vicky Lovatt



ODE TO A POPPY

Adventurers call Tibet's Yarlung Tsangpo River, the "Everest of Rivers" for good reason. Stretches of it are some of the least-explored places in the world, and tales of failed expeditions abound. Nevertheless, the fruit of such brave quests of discovery, like the Himalayan blue poppy, propel a new generation forward. As the remembrance poppy reminds us, each generation is richer for the heroes of the past. Whether a design erupts from a designer's own imaginings or is celebrated because of the bravery of others, the fragile form of poppies with petals holding delicate veining and ruffled or smooth edges complete with large cupped flowers have adorned the Applied Arts since time immortal.

Prince of Orange
Designer: Emma Bossons FRSA
402/4 | Limited Edition 20



Resilience
Designer: Kerry Goodwin
158/4 | Open Edition



Tibetan Dream
Senior Designer: Rachel Bishop
41/4 | Open Edition



Ode to a Poppy
Senior Designer: Rachel Bishop
7/5 | Open Edition

RANELAGH GARDENS

Senior Designer: Rachel Bishop



The RHS Chelsea Flower Show, the world's greatest flower show, was held for the first time ever in September last year. To celebrate the occasion, Rachel Bishop presents a sumptuous autumnal design for everyone to enjoy. Autumn is usually associated with the maturing of the calendar year, but for the RHS Chelsea Flower Show it came as a refreshing and revitalising opportunity. Rachel's design features *Dahlia* 'Bishop's Children' - dahlias of burgundy and gold nestled amongst lagoon-blue salvia. The bouquet culminates with wild grasses and beautyberries, *Callicarpa bodinieri*, dashing to and fro in the excitement. The design's namesake stems from Ranelagh Gardens, the public pleasure gardens located in Chelsea in the 18th century, now part of the grounds of Chelsea Hospital and the site of the RHS Chelsea Flower Show, a part of London that is now synonymous with floral excellence, in both botanical and pottery forms, around the world.



81/18 | Limited Edition 15



PLQ16 | Limited Edition 15

© The Royal Horticultural Society. The Royal Horticultural Society, and its logo, are trade marks of The Royal Horticultural Society (Registered Charity No 222879/SC038262) and used under licence from RHS Enterprises Limited.

FOR THE LOVE OF ORCHIDS COLLECTION

Designer: Nicola Slaney

In April 2022 a simple memorial plaque was placed at the burial site of Nelly Roberts, the first orchid artist for the Royal Horticultural Society's (RHS) Orchid Committee and a bunch of orchids was laid beside it by the current RHS orchid artist Deborah Lambkin. The sheer beauty that this watercolourist's brush captured during her 56-year career as an illustrator for the RHS Orchid Committee is incalculable, diffusing her talent on generations to come in much the same way as the forefather of Moorcroft pottery, William Moorcroft, born like Nelly in 1872, left a legacy of cultural heritage in the ceramic idiom. Nelly's illustrations received no global fame outside of the horticultural world and yet are the most exquisite illustrations you are ever likely to observe. The first and, to date, longest serving RHS orchid artist, Nelly painted life-sized illustrations of award winning orchids. These built a reference collection for the Society that are held within the RHS Lindley Collections. Nelly left behind over 4,500 studies of orchids, which have been lovingly commemorated in *For The Love of Orchids RHS Collection* to mark the 150th anniversary of her birth in October 2022.

Each design holds a different orchid cultivar or hybrids inspired by Nelly's work, and even orchids holding her own name, will blossom in fired earth as a worldwide testament to the genius of Nelly Roberts.



Odontoglossum Opheron gx 'Nelly Roberts'
© RHS. Credit RHS Lindley Collections /
Nelly Roberts



Cattleya Dupreana gx 'The Dell' © RHS.
Credit RHS Lindley Collections / Nelly Roberts



Almandin
PLQ7 | Open Edition

The Dell
JU9 | Numbered Edition

Nelly Roberts
375/12 | Limited Edition 25

Rameses
769/6 | Numbered Edition

Vine House
CL1 | Open Edition

© The Royal Horticultural Society. The Royal Horticultural Society, and its logo, are trade marks of The Royal Horticultural Society (Registered Charity No 222879/SC038262) and used under licence from RHS Enterprises Limited.

COLOURS OF AUTUMN COLLECTION

Nothing compares to the range of depth and intensity of the colours of autumn. Red for energy, passion and action; brown calls for security, protection and earthy tranquillity; yellow, the colour of cheerfulness, the mind and the intellect; orange the colour of adventure, radiating warmth and happiness, and when combined, the autumnal colour palette holds an energy like no other season igniting the fire of autumn.

The *Colours of Autumn Collection* takes you into a world where ceramic alchemy reveals autumn's glory a decadent feast for the eyes as we journey through autumnal scenes and images holding a hearty blast of warmth.

JUNIPER

Designer: Vicky Lovatt



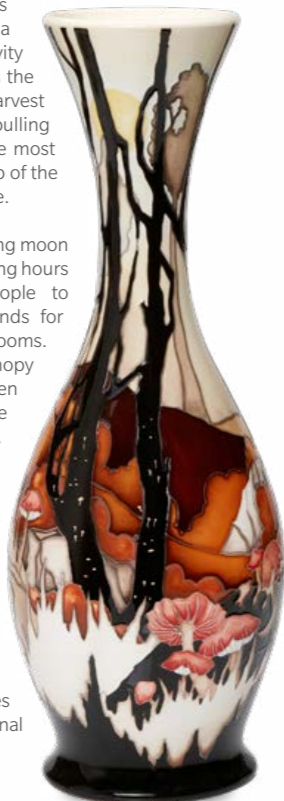
370/2 | Open Edition

SONG MOON

Designer: Vicky Lovatt

Historically the harvest moon, or song moon as it is sometimes known, falls in September. For centuries the song moon has shone down at a time of great activity and hard work, as the gathering of the harvest saw people pulling together to do the most important farm job of the year in a short time.

The light of the song moon extended harvesting hours and enabled people to forage in woodlands for berries and mushrooms. Under a canopy of trees, hidden amongst the woodland floor, wild mushroom varieties such as Velvet Shank and Leaf Parachute grew. The pale song moon cast long shadows over the frosty ground, so that trees trunks become silhouettes against the autumnal sky.



81/14 | Limited Edition 20

WOODLAND WALK

Designer: Alicia Amison

Beech, oak and silver birch cascade down the steep-sided bank as late autumn takes hold of this ancient woodland and trees give-up their final flourish of colour to the woodland floor. A couple holding hands walk their small grey dog, happily ferreting for seasonal finds, towards a reservoir. With the foreground framed with seasonal foliage of glossy, deep-brown conkers in tortoiseshell-greens, golden acorns in their russet homes, oak leaves of sepia, peach-tinted parchment, and burnished copper, all ignited by bright-red berries, silhouettes of towering trees disappear into cool-blue waters.



PLQ17 | Limited Edition 15

EPHEMERAL RIVER

Designer: Paul Hilditch

Ephemeral River embodies a river song from the beginning of time, where a river meanders rigorously through lines carved out by glaciers, sweeping away the 1920s *Moonlit Blue* trees, to reveal colossal scots pines and clouded branches soaring into the ether. Dramatically, an amber tinged sky seeps into the waters from above the ephemeral river, and the mountainous terrain is ignited by a new dawn of design on an epic scale.



101/12 | Limited Edition 20

MIGHTY OAKS

Designer: Nicola Slaney

A branch of acorns with rust coloured leaves swings naturally into the forefront of this design. Behind, ancient oaks wave their mighty branches holding a vibrant green plumage gently changing to russet. Many acorns do not get the chance to grow to mighty oaks, as they are a rich food source for wildlife. On the horizon, a line of conifers stand proud in all their greenery but their beauty cannot be compared to the mighty oaks.



PLQ3 | Limited Edition 15

AUTUMN EQUINOX

Designer: Emma Bossons FRSA

For an instant you glimpse William Moorcroft's *Eventide* c.1920, and then you notice that you are entering into territory that you have not seen before, where dome-shaped hills of midnight blue release a sense of peace. The landscape holds the mystery of an autumn equinox. Under clouds of cherry-red leaves, the sky glimmers in chestnut gold before diffusing into a blue tide over undulating hills. The allure of this design is simple – a surreal landscape, holding all the colours of autumn's equinox. With mastery, the distinctions between copse and sky become fused, woven together in the breathtaking world of Autumn Equinox.



46/12 | Numbered Edition

REVERIE

Senior Designer: Rachel Bishop

Cornelian-red toadstools with tiny white spots display their vibrant parasols under a shower of Lily of the Valley. Hanging like medieval lanterns, the bell-shaped white pendants rise up through large lance-shaped dark green leaves against an inky-blue ground, electrifying the design with the magic of dusk. Whilst snowy bells ring in the harvest moon, toadstools, said to grow where fairies dance, leap into pillars of red jubilation as if commanded by the Sorcerer's Apprentice.



80/6 | Numbered Edition

THE SLEEPER

Designer: Vicky Lovatt

The name of the dormouse has the same origin as the French word dormir which means 'to sleep' and colloquially the dormouse is known in Britain as 'the sleeper'. Remarkably, they can spend as much as seven months of the year asleep. Vicky's adorable sleeper, with tiny toes tucked into his warm hazel coat, is tightly curled up at the neck of the vase, hidden within the russet-toned thicket. On the reverse of the vase, a startled dormouse will soon settle down to feast on the late summer hazel-nuts that deck his woodland home.



75/10 | Limited Edition 20

MR BRAMBLE

Designer: Kerry Goodwin

Shafts of sunlight that penetrate the wood floor to create pools of light and reveal a lone, brown hare hidden within the freshness of soft-green brambles, and circled by fruity burst of maroon to deep burgundy blackberries. Kerry creates this snapshot of Mr Bramble, sitting pensively as he listens to a rustle within the thicket, by the simple use of a cream ground colour against a colourful central composition.



PLQ8 | Numbered Edition

PANNAGE

Senior Designer: Rachel Bishop

Rachel knew all about the ritual of pannage from her childhood in the New Forest. Pannage allowed local folk to free their domestic pigs to roam the New Forest every September when acorns and other nuts fall from the trees. Under the shadow of ancient oaks, this design holds a trio of pigs scouring the forest to eat up all the acorns and nuts to unknowingly help the ponies and other cattle, as these "pig treats" would be poisonous to them. Balancing neatly on an overhanging branch, a grey squirrel clutches an acorn from above the feasting hoard, happy at least, that some chestnuts have already been stowed away.



PLQ8 | Limited Edition 25

GRACE AND PACE

Designer: Kerry Goodwin

Few cars can arouse the enthusiasm more than the sports racing cars of the 1950s. Enter the world of Stirling Moss and the Le Mans of 1953, as the excitement reaches fever pitch in a bedlam of swerving cars and wheel sparks, followed by a frenzied team of men in grey boiler suits, scrambling like ants over delicacies, to undertake fast tyre changes during crucial pitstops.



RM2/6 | Numbered Edition

GOODWOOD REVIVAL COLLECTION

"Racing is a great mania to which one must sacrifice everything, without reticence, without hesitation."
Enzo Ferrari.

The Goodwood Revival, the world's greatest historic motor race meeting and the only sporting event of its kind to be staged entirely in a period theme, returns to the tracks with high octane action from some of the most beautifully crafted classic cars ever seen. Goodwood is a unique sporting estate set in 12,000 acres of beautiful South Downs countryside. Owned by the Dukes of Richmond since 1697, it has become famous for three of the biggest events in the social and sporting calendar: the Festival of Speed, the Qatar Goodwood Festival and Goodwood Revival. As enthusiasts gear up for the 2022 Goodwood Revival, Moorcroft has been crafting its own designs of triumph.

This ceramic collection, crafted by hand in Moorcroft's own time honoured traditions, celebrates the genius of Moorcroft designer, Paul Hilditch, and his incredible eye for detail and ability to conjure up a scene where you can almost hear the gear boxes rev and the tyres screeching around the tracks in a blaze of colourful glory.

RACING FROGEYE SPRITES

Designer: Paul Hilditch

Although known to race at Goodwood, the Frogeye Sprites were primarily associated with the Circuit of Ireland, and over the years, these compact little movers have received a cult following notwithstanding their single greatest weak point – they held a double curvature Plexiglass windscreen that made night-driving, particularly in the wet, very difficult to say the least. Captured on this apt squat-shaped vase, the quirky little Frogeye Sprites fly past like clumsy beetles jostling for food as one driver spins at the hairpin and another takes avoiding action to heighten the drama of these nostalgic racing cars.



198/5 | Limited Edition 15



Reverse of vase

THE CIRCUIT

Designer: Paul Hilditch

Somehow Moorcroft designer, Paul Hilditch, managed to find an interesting old photo of Goodwood in its racing glory days, where giant haystacks, canvas tents and the old airfield tower were a stone's throw from the track. The field would have consisted of the iconic sports cars of the 1950s and 1960s - where Healeys, HRG's and a Mycroft-Jaguars roared in wild abandonment. But there was a catch. All the old footage was in black and white. Fortuitously, with further reserve and some imagination Paul captures the scene in sporting greens, tuxedo blacks, racing reds and the legendary Bugatti-Blues. As the cars come hurtling towards the chequered flag, Paul takes us to the side-lines, where there are no barriers from the speed and the noise, to experience the raw heat of competition from the circuit.



THE GARAGE

Designer: Paul Hilditch

The unmistakable Bugatti-Blue in this garage reveals a super-car of dreams. In the case of the Type 45, Bugatti was able to achieve 250 bhp, through a union of two supercharged Type 35 Grand Prix engines. The bulky engine sat in a conventional chassis which was renowned for its light weight and nimble handling and the sports car is pictured in this design, complete with driver in all his racing attire, during a wheel change. The hive of activity harks back to a time when automotive excitement was charged with the fast pace of new design and at a time when even the distinctive Bugatti-Blue colour, cleverly captured in Moorcroft metallic oxide paints, added to the excitement of new engineering prowess.



CATCHING THE WIND

Designer: Paul Hilditch

A flotilla of racing sailing boats whip across the crested waves of the sea, each trying to out manoeuvre each other to take the lead position. Each sailing boat tries to catch the wind in their billowing sails and use it to their advantage. Closer to shore the sea is calmer, with the hills protecting those sailing from the buffeting wind, but out on the high sea, each ship's crew seek to catch the wind and race away to victory.



Egg | Open Edition

Egg | Open Edition

THE BEMPTON CLIFFS SEAFARERS COLLECTION



RSPB Bempton Cliffs, on the spectacular Yorkshire coast, is home to one of the UK's top wildlife spectacles. Around half a million seabirds gather here between March and October to raise a family on towering chalk cliffs overlooking the North Sea. The Bempton Cliffs Seafarers Collection takes a bird's-eye view of this nature reserve. It observes the cliff residents of puffins, gannets and guillemots, as well as barn owls and even a six-spot burnet moth, to create a revelation of natural beauty hidden in the heights, and the myriad marine colours from the deep.

Produced under license from RSPB Sales Ltd to raise awareness of the RSPB (charity registration England and Wales no 207076 and Scotland no SC037654). For all licensed products sold by W. Moorcroft Ltd, W. Moorcroft Ltd will donate a minimum of £1000 per annum to RSPB Sales Ltd, which gives all its distributable profits through Gift Aid to the RSPB.

LIFE ON THE EDGE

Designer: Kerry Goodwin

Guillemots are perfectly adapted to life on the edge. Even their eggs are unusually pear-shaped to reduce the risk of them rolling off the perilous cliff ledges where they are laid. Kerry allows us to have a bird's-eye view of the Bempton Cliffs colony, tightly packed on steep ledges and chalk cliffs, where eggs can be found nestled into crevices on the bare rocks. The sheer heights of this great seabird city can be appreciated with each turn of the vase, as the birds stand, fly, swoop and squawk, bustling for space in their black dinner suits. Silvery fish swim in shoals 400-feet, utterly unaware that the birds will dive down and use their wings to swim after them in Life on the Edge.



65/16 | Numbered Edition

THE BEMPTON CATCH

Designer: Emma Bossons FRSA

Also known as sea parrots, these puffins circle the vase with their rotund features and comical gait. Yet there is something more. The curves of their pure-white eye-markings and lines on their beaks mimic the breath-taking linear structure of the soaring white chalk cliffs on which they perch.

Interestingly, a puffin has adaptations that enable it to bring lots of fish back to its chick in one go. Their tongues are rough to help them hold on to their slippery catch, while their beaks are cleverly hinged, allowing them to close parallel, keeping the fish in place. Moorcroft designer Emma Bossons draws the focus away from these curious sea parrots with the clever use of silver-coloured lustre on the fish to create The Bempton Catch.



80/6 | Numbered Edition

SEAFARER'S DAWN

Designer: Vicky Lovatt

The precipitous coast at Bempton Cliffs has around 500,000 pairs of breeding seabirds. Gannets, guillemots, kittiwakes and puffins nest on the ledges of the 400-foot high cliffs. Red campion flowers erupt like a thousand miniature volcanoes in stark contrast to the brilliant-white chalk cliffs that disappear into a seafarer's dawn in line upon line of rocky outlets and hidden coves. The sights and sounds and smells of soaring, swooping gannets combine with panoramic sea views to create an unforgettable seafarer's dawn.



317/9 | Limited Edition 10



Reverse of Vase

CLIFFTOP MEADOW

Designer: Vicky Lovatt

The six-spot burnet moth is a common sight in cliff-top habitats like Bempton. The moth's curious thinly-scaled, grey-blue forewings contrast with 5 or 6 ruby-red spots and black body. Seated under a fanned sunburst motif of deep-pink milk thistle discs, this burnet moth is surrounded by stylised green bracts.



102/3 | Limited Edition 20

MOONLIT SEAS

Senior Designer: Rachel Bishop

A lack of good places to nest is one of the reasons we are seeing fewer barn owls gliding silently over our fields these days. So, the RSPB team at Bempton Cliffs were delighted to discover that barn owls had taken up residence in one of the special nest boxes that had been put up for them. They were even more excited when the owls managed to fledge chicks. The elation of this moment is captured here, as a lone barn owl soars over the moonlit, silvery sea. Raising the hairs on the back of your neck, the owl silently floats, with its colossal brilliant-white, six-foot wingspan and moon face, within the sphere of the full moon. Light and shadows ripple over the water in this atmospheric twilight world of Moonlit Seas.



PLQ3 | Numbered Edition

95/10 | Numbered Edition

ROCKBOURNE

Senior Designer: Rachel Bishop

Rockbourne Trout Fishery is located in the New Forest complete with six lakes spread over 55 acres of unspoilt woodland and pasture land. Rockbourne is one of the most peaceful, secluded and beautiful spots in the country with an abundance

of exquisite wild brown trout. With movement in the round, so hard to create on a plaque without the voluptuous curves of a Moorcroft vase, a lone fish curls around the water lily pads and stems, on its journey to the surface.



PLQ2 | Numbered Edition

THE WINDY CITY

Designer: Paul Hilditch

Chicago is well-known for its magnificent skyline that stretches across the waters of the massive freshwater Lake Michigan where the cold air that blows through the city originates. Paul's focus is found in the City's nickname "The Windy City." Apart from the blustery winds, it is said that Nineteenth-century journalists first gave Chicago this designation when criticizing the city's elite as "full of hot air." In the *Chicago Daily Tribune*, a reporter wrote in 1858 that "a hundred militia officers, from corporal to commander ... air their vanity ... in this windy city."

Paul uses four distinct panels to conjure up a storm – from a Chicago newspaper stand, papers rise up the Art Deco streets as a man in pin-striped suits look down from a Juliette balcony, ladies in 1950s attire clutch tightly onto their hats and men nod their brims earnestly, and autumn leaves and papers swirl under billowing hotel flags. Whilst the blustery commotion is detailed with Paul's trademark humour, including the fur on an Afghan dog rippling with drama.



200/15 | Numbered Edition

CRACKLING FIRE

Designer: Nicola Slaney

Every year on the 5th November, people in Britain celebrate the failure of the Gunpowder Plot in 1605 with bonfires and fireworks. These days Bonfire Night is a less serious affair as most seize the opportunity to join friends and family and enjoy the spectacle of the night.



PLQ3 | Numbered Edition

HANABI

Designer: Vicky Lovatt

The Japanese word for fireworks, hanabi, means fire flowers, which seems particularly fitting when you look at illustrations from the late 1800s of Japanese fireworks bursting into life. This is where Vicky found inspiration. Red, yellow and blue fireworks provide an explosion of colour in the dark, ink blue night sky, while those in the small houses below, gaze in wonder at the colourful display above them.



03/4 | Numbered Edition

WOODSIDE FARM

Designer: Anji Davenport

15 years ago Anji Davenport returned to Moorcroft and picked up her paint brushes again. Soon afterwards followed the arrival of her Woodside Farm prestige vase. To celebrate Anji's talent as both a painter and designer, Woodside Farm has been encapsulated on three vases to mark the occasion of her crystal anniversary at Moorcroft – each painted by Anji herself.



25/9 | Limited Edition 15



364/12 | Limited Edition 15



46/10 | Limited Edition 15



W. Moorcroft Ltd., Sandbach Road, Burslem, Stoke-on-Trent, Staffordshire ST6 2DQ, England.
Telephone: +44 (0)1782 820500 Email: enquiries@moorcroft.com
www.moorcroft.com